

Qbus wireless Zigbee thermostat (Flush-mount) (QWZ-TH)



1. Product description

The QWZ-TH is a 230V powered room thermostat that can be linked to the Qbus Wireless Interface with Zigbee protocol (QWI/ZB). Thanks to the connection with the Qbus controller via the QWI/ZB, numerous applications and configurations are possible.

The room thermostat QWZ-TH has the usual functions for temperature control but can also control the ventilation speed of a fan.

There are 3 relay contacts integrated for the direct control of a fan with 3 settings. In addition, there is a potential-free contact for heating and a potential-free contact for cooling.

2. Safety Regulations



Read the complete manual before installing and activating the module.

ATTENTION

- The module must be installed, started, and maintained by a certified electrical installer in accordance with the current legal regulations of the country.
- Before working on the QWZ-TH, the power supply must be disconnected.
- The module should be placed in a suitable recessed box with screw fastening.
- The module must not be opened. The warranty will be voided if the module is opened!

3. Installation

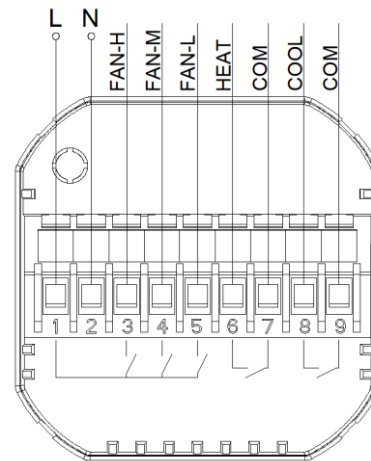
Mounting advice:

Place the thermostat out of direct sunlight.
Preferably install it on an interior wall.

- Avoid air circulation behind the thermostat.
- Installation height should be 150cm from floor level.
- Ensure that the mounting screws are horizontal..

CAUTION: DISCONNECT THE POWER SUPPLY TO THE MODULE BEFORE WORKING ON THE MODULE.

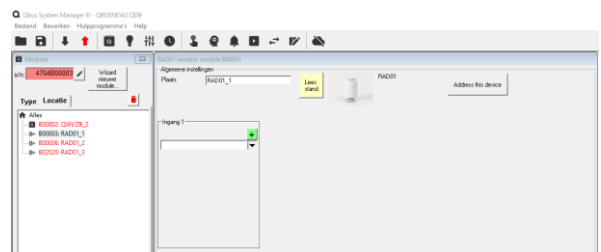
Power Supply: A two-pole automatic fuse with a maximum rating of 6A must be connected to the module's 230Vac power supply. Remove approximately 5mm of insulation from the conductor and screw the conductor into the L-N connector.



4. Commissioning

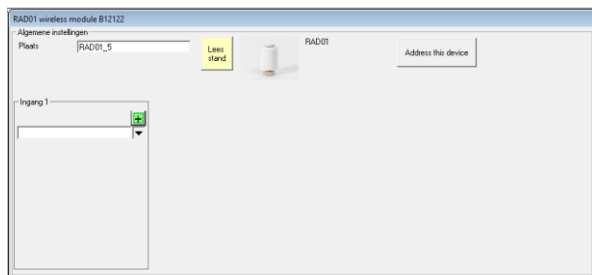
Pairing with the QWI/ZB:

1. Enter the serial number of the QWZ-TH in SMII under "modules".



2. Simultaneously press and hold the two middle buttons with the fan symbol and the symbol for the selection menu for more than 5 seconds. The cloud icon and RF icon on the display will start blinking.

Qbus wireless Zigbee thermostat (Flush-mount) (QWZ-TH)



Click on "Address Device" in the system manager. Pairing the QWZ-TH with the QWI/ZB may take up to a full minute.

Unpairing:

If the module is paired with the QWI/ZB and you want to clear this connection, follow these steps to reset the module:

- Open the configuration screen of the QWZ-TH in SMIII and click on the "Remove from network" button.
- OR**
- Simultaneously press and hold the two middle buttons with the fan symbol and the symbol for the selection menu for more than 5 seconds. The cloud icon and RF icon will blink. The QWZ-TH is now disconnected from the Zigbee network.

5. Troubleshooting

If the QWZ-TH does not respond to commands from the Qbus system or if changes made through the QWZ-TH are not synchronized with the Qbus system anymore:

- Check the configuration of the QWI/ZB and verify if the link with this module is still active. The connection may have been accidentally removed due to incorrect actions on the QWZ-TH thermostat.

If the module is not functioning:

- The display does not light up when operated => check the power supply.

6. Technical data

General Specifications

- Power Supply: 90 - 230Vac; 50/60Hz – maximum protection C2A/2P
- Temperature Accuracy: 0.5 °C
- Room Temperature Display Range: 0–50°C
- Room Temperature Control Range: 5–35°C
- Storage Environment Temperature: -10°C to 60°C
- Frequency: 2.4GHz
- Wireless Communication Protocol: Zigbee
- Maximum Installation Altitude: 2,000 meters above sea level

Distances of Zigbee RF Signal to the Next Active Participant:

- Within the same building and on the same floor: 15m
- Within the same building but on a different floor: 10m
- Open air: 50m.

Physical Specifications

- Degree of Protection: IP20
- Outer Dimensions: 86x86x10mm

- Installation Depth: 35mm (+ additional depth required for wire connections!)
- Suitable for recessed boxes with screw fastening

CE Marking:

- Qbus declares that this product complies with all applicable European directives and regulations.
- The EU Declaration of Conformity can be consulted on our website www.qbus.be.

7. Explanation of Symbols



Equipment where protection against the risk of electrical contact is not solely based on basic insulation but also on additional protection such as double insulation or reinforced insulation. There is no possibility of grounding.



Before connecting the device, it is mandatory to read the manual of the respective product. ISO7000-0434.



Mains connection (230V) at the power connector. IEC 60417-5036.



Do not dispose of electronic products via the general waste stream. Directive 2002/96/EC.



CE conformity. All declarations of conformity are available upon request.

8. Warranty Terms

Warranty Period: 2 years from the date of delivery. The warranty is no longer valid if the module is opened!

In case of defects, please contact Qbus support first and follow their instructions. Modules sent for repair must be accompanied by a description of the defect and should be sent without seals to:

Qbus NV
Joseph Cardijnstraat 19
B-9420 Erpe-Mere
Tel: +32 (0)53 60 72 10
Fax: +32 (0)53 60 72 19
Email: support@qbus.be