

UBIETOUCH 8"



1. Product description

The UbieTouch display is an 8" touch screen used to visualize and control your Qbus or Ubie installation. The display can also function as the indoor panel of the videophone system (compatible with SIP videophone units).

The UbieTouch display has an RJ45 connection to connect to ethernet cable.

The Display is available in white or black finishing.

Included in the box:

- 1 x UbieTouch Display
- 1 x mounting bracket which fits a Bticino 506E wall mount box
- 4 x mounting screw

2. Safety rules

Read the entire manual before installing the module and activating the system. Failure to follow the included documentation may damage the product and will void the manufacturer's warranty.

Follow all installation guidelines included with the product.

Installation of the product in high humidity environments, in close proximity to heat sources and/or non-recommended locations will impede, interfere and/or damage the intended operation of the product. Only use attachments and accessories which have been specified for use by the manufacturer. The use of abrasive, liquid or solvent-based cleaning fluids will damage the product. Product Servicing may ONLY be completed by authorized or certified service centers & personnel. For a complete list of product servicing options, please follow instructions included in the product documentation and/or contact the original manufacturer for details.

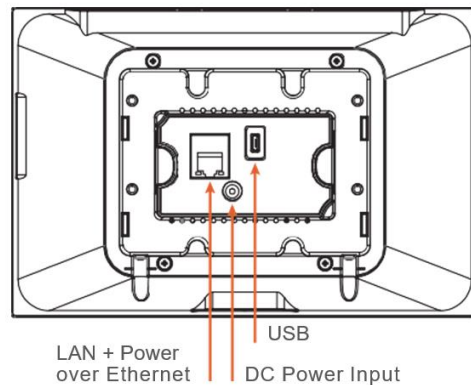
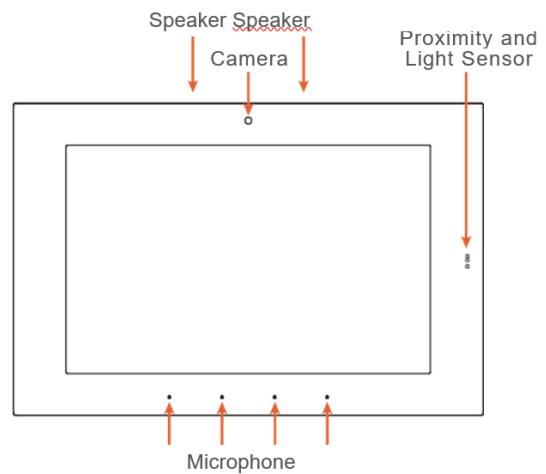
NOTE

- The module must be installed, started and maintained by a qualified electrician in accordance with the applicable national legal regulations.

- The device is designed for installation in low humidity indoor environments and should never be installed outdoors or in high humidity areas.
- The module may not be opened. The warranty will expire once the module is opened!

3. Installation and wiring

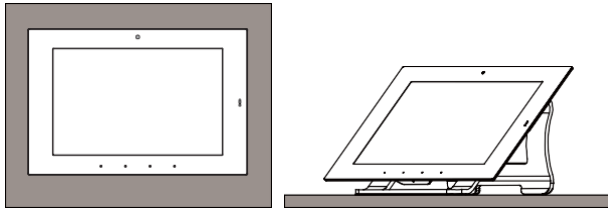
UBIETOUCH OVERVIEW



PLANNING THE INSTALLATION

The device is designed to be wall mounted in either Portrait or Landscape orientation, or on tabletop with stand (optional).

UBIETOUCH 8”



The device requires a minimum mounting depth of 2.45cm from the wall surface to the room for cable/s. Power may be supplied by Power Over Ethernet (PoE) or by a 24V DC power supply (not included). PoE connecting must meet the IEEE 802.3af standard. Direct power connecting via a 24V DC external power supply requires a minimum current output of 1A. The device connects to the local network via a hardwired Ethernet connection.



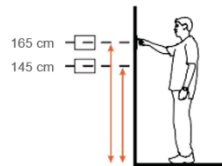
Connecting the device to the power

The device is designed to be powered over the Ethernet connection (PoE) or by connecting a 24Vdc power supply (not included), but not both. If both the PoE and a 24Vdc power supply are connected, the device will draw power from the 24V DC source.

INSTALLING THE UBIETOUCH

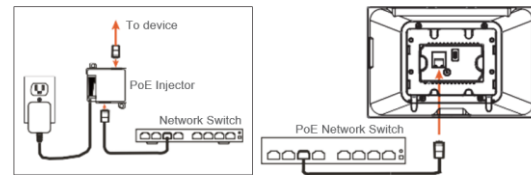
Mounting height

The recommended mounting height for the device is 145 cm -165 cm from the finished floor to the center of the unit.



PoE Connection

PoE connection requires IEEE 802.3af standard. Utilize a network switch or PoE injector that meets this standard. Connect the device using a standard T568A or T568B Ethernet cable from the network switch to the LAN/Po jack on the back of the device.



Device can be mounted and oriented in Portrait or Landscape.

Installation of the Bticino 506E wall mounting box

ATTENTION: the Bticino 506E wall mounting box must be mounted in such a way that the mounting holes are at the top and bottom (ie turned 90°).



Installing the mounting bracket

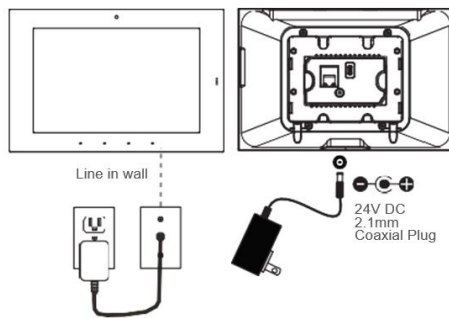
The UbieTouch comes with a stainless steel mounting bracket that must be used for installation. The mounting bracket screw holes fit the screw holes on a Bticino 506E wall mount box. Verify that the bracket is level before tightening the captive screws on the device.

24V DC Power Supply

You can provide power locally or remotely to device by utilizing a 24V DC power supply (not included). Please note that running the wire through the wall in accordance with local codes when powering locally. If powering remotely, please ensure to use wire of adequate gauge for the length of the run. Please use approved 24V DC power supply.

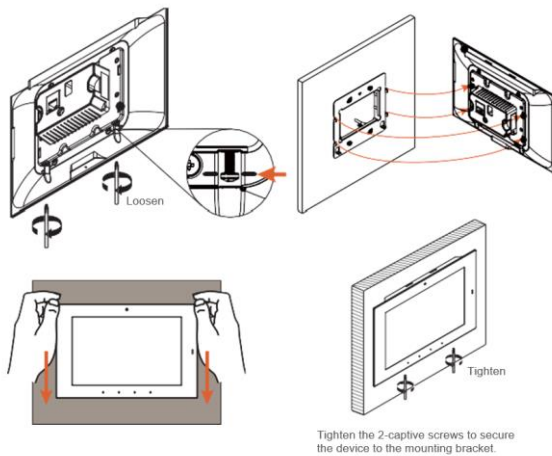
Verify the polarity of the barrel connector on your power supply before connecting it to the device. The center pin of the device power connector is positive and the outer ring is negative. If the wire is extended, please ensure that the routing is in compliance with local codes. Plug the connector into the device DC jack on the back of the device.

UBIETOUCH 8”



Mounting the UbieTouch

1. Loosen the captive screws of the unit first. Screws should not be moved apart from the unit. Please meet the indicated line.
2. Align the mounting frame hooks with the mounting slots and gently pull the unit down the mounting bracket. Make sure the mounting hooks are properly engaged.
3. To complete the installation, tighten the 2-captive screws on the bottom part of unit, to secure the device on the mounting bracket.
4. For Portrait orientation, rotate mounting bracket and 90 degrees in counterclockwise direction before installation.

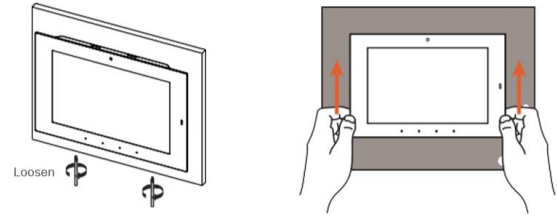


Powering up the UbieTouch

The device will automatically power on when power is applied. Wait for the unit to boot up. When it's connected to a network switch by Ethernet cable, the device will acquire a network address via DHCP and automatically connect to the system.

Removing the UbieTouch

Loosen the 2-captive screws on the device, then slightly pull straight up from the mounting frame to disengage the unit.



4. Technical data

System Architecture

- iMX8 Dual Core processor
- 1,8GHz
- 64-bit H.265 1080p Full-HD video playback
- 3D graphics

Memory

- 2GB LPDDR4
- 8GB of eMMC

Display

- High-performance HD, ISP 8” LCD, 1280x800 resolution
- Colour Depth: 16,7M colours, 400 nits brightness
- Five fingers projected capacitive touch supporting multi-touch & gesture
- Proximity & light sensor

Audio

- High-fidelity audio with 2W amplifier
- Smart microphone for high quality voice capture
- VoIP SIP client

Network / Connectivity

- Gigabit Ethernet controller

Software

- OS: Android 6.01
- The Qbus app and the Ubie app is factory-installed on the UbieTouch.

Power

- Isolated PoE 13W
- 24DC power jack

Physical specifications:

- Dimensions (h x w x l): 148,4mm x 223,5 mm x 15,8 mm

Electrical security:

- FCC Class B, FCC Part 15
- CE
- RoHS / WEEE compliant

5. Warranty provisions

Warranty period: 2 years from delivery date. The warranty no longer applies if the module has been opened!

Defective modules must be sent free of stamp with a description of the defect to our service department

QBUS N.V.
Joseph Cardijnstraat 19
9420 Erpe-Mere
Belgium

T +32 53 60 72 10
F +32 53 60 72 19
Email: support@qbus.be